



GMT MONTHLY MEMBERSHIP PROGRESS REPORT

Results as of: 6/30/2017

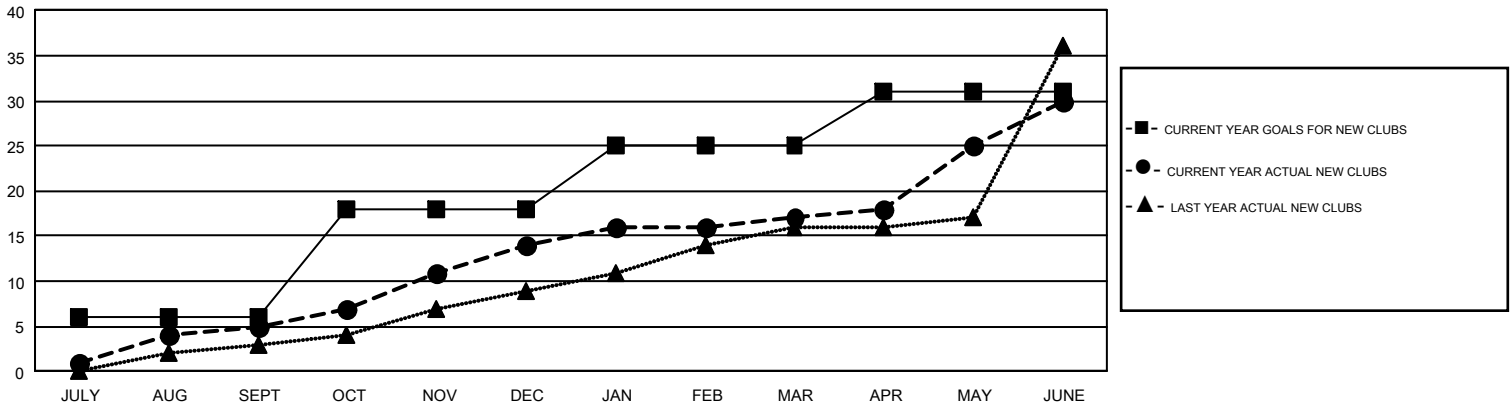
GMT Constitutional Area 3, Group B

GMT: OPEN

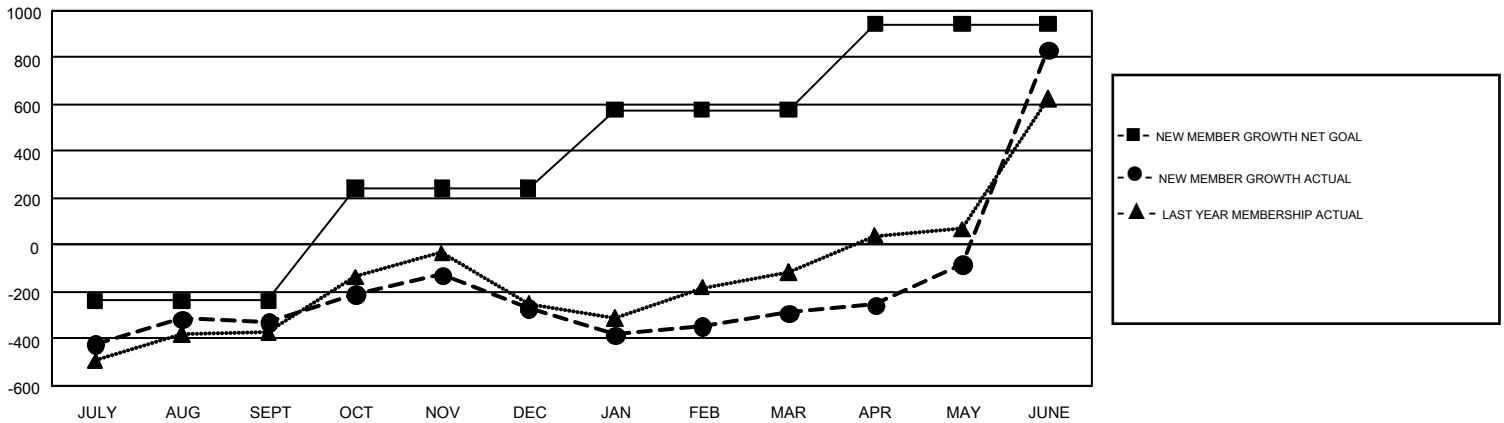
REPORT DOES NOT INCLUDE CLUBS IN UNDISTRICTED AREAS.

Clubs				Members			
RESULTS FOR 2016-2017				RESULTS FOR 2016-2017			
QUARTER	NEW CLUB GOAL	NEW CLUBS	DROPPED CLUBS	QUARTER	NEW MEMBER GROWTH NET GOAL (not reinstated or transfers)	NEW MEMBER GROWTH ACTUAL (not reinstated or transfers)	DROPPED MEMBERS ACTUAL (including transfers)
JULY/AUG/SEPT	6	5	1	JULY/AUG/SEPT	-238	476	806
OCT/NOV/DEC	12	9	11	OCT/NOV/DEC	480	707	646
JAN/FEB/MAR	7	3	4	JAN/FEB/MAR	336	351	372
APR/MAY/JUNE	6	13	10	APR/MAY/JUNE	366	1,968	843

GOALS AND ACTUAL NEW CLUBS CUMULATIVE



GOALS AND ACTUAL MEMBERS CUMULATIVE



DROPPED CLUBS: 26	432 CLUBS OF 595 ADDED 1 OR MORE NEW MEMBERS	GENDER DISTRIBUTION MALE 6,573 (43.26%) FEMALE 8,621 (56.74%)
DROPPED MEMBERS DECEASED 93 CLUB CANCELLED 490 OTHER 2,084 <hr/> TOTAL 2,667	CLICK HERE FOR CUMULATIVE MEMBERSHIP DATA	TOTAL FAMILY UNIT MEMBERS 5,257 FAMILY MEMBERS PAYING HALF DUES 3,138